



Report of Test

LLIA001582-001

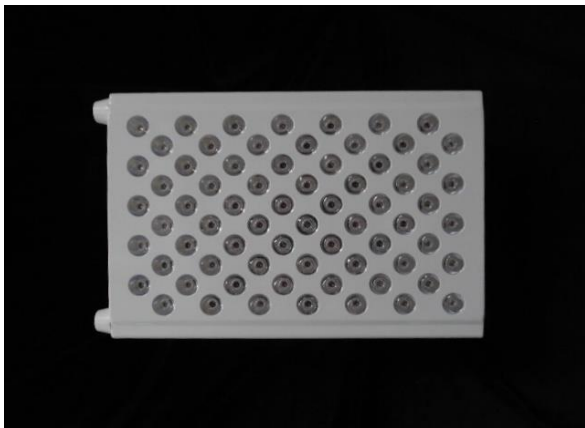
Integrating Sphere Report

Catalog Number: Vital PRO

Portable, formed steel housing, 1 aluminum mounting plate with 2 heatsinks and 2 fans above LEDs.

70 LEDs - 35 red and 35 infrared, each with clear conical plastic optic

2 LED Power Supply IL-60W--W, 2 IL-12V-FAN, and 1 unmarked black box



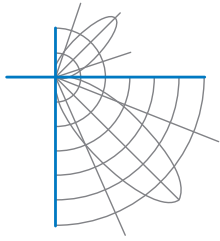
Performance Summary

Voltage	120.0 Vac
Current	1.301 A
Power	121.9 W
Frequency	59.99 Hz
Power Factor	0.781
Current THD	8.8 %
Total Luminous Flux	1252.7 lm
Efficacy	10.3 lm/W
Chromaticity (x,y)	(0.7132, 0.2828)
(u',v')	(0.5743, 0.5124)
Total Rad Energy in 10 minutes	26641 Joules
Total Rad Power	44.40 Watts
Device Luminous Area‡	498.8 cm ²
Radiant Exposure in one minute	5.34 J*cm ⁻² *min ⁻¹

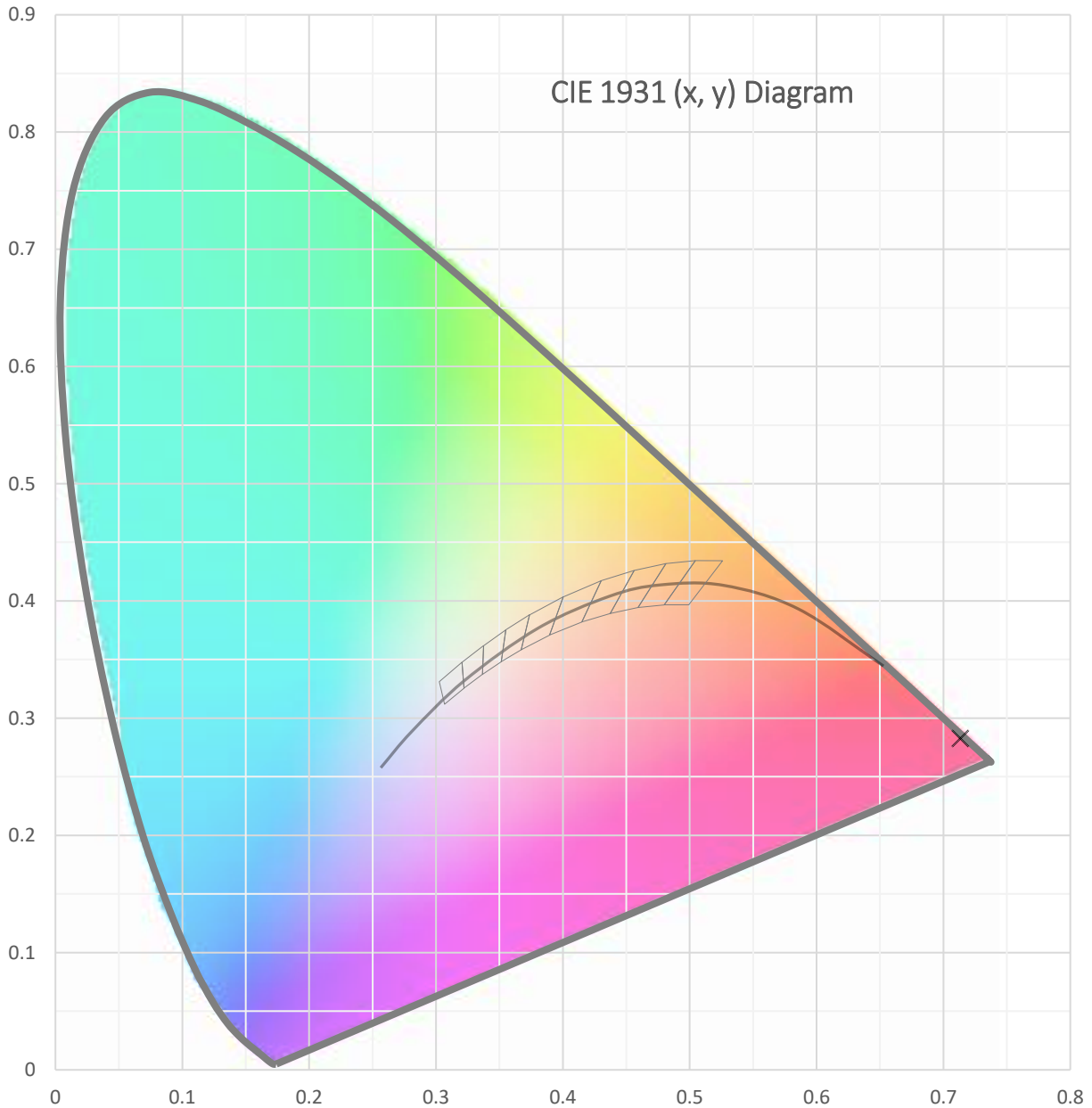
Prepared For:
Vital Red Light
130 Audubon Drive
Buffalo, NY 14226, USA

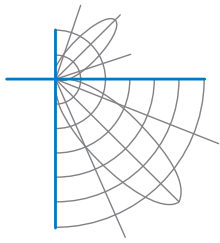
Test date: 11/18/2021
Report date: 11/23/2021

Signed: _____



Test Report Number: LLIA001582-001



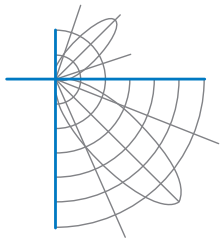


Test Report Number: LLIA001582-001

Total Radiant Flux	44.40 W
Total Luminous Flux	1252.7 Lm
Chromaticity CIE 1931 (x, y)	(0.7132, 0.2828)
Chromaticity CIE 1976 (u', v')	(0.5743, 0.5124)
Correlated Color Temperature (CCT)	N/A K
Color Rendering Index (Ra)	N/A
R1	N/A
R2	N/A
R3	N/A
R4	N/A
R5	N/A
R6	N/A
R7	N/A
R8	N/A
R9	N/A
R10	N/A
R11	N/A
R12	N/A
R13	N/A
R14	N/A
TM-30: Rf	N/A
TM-30: Rg	N/A
TM-30: Rcs,h1	N/A
Distance from Planckian Locus (Duv)	N/A
Scotopic/Photopic Ratio ‡	0.056

Electrical Data

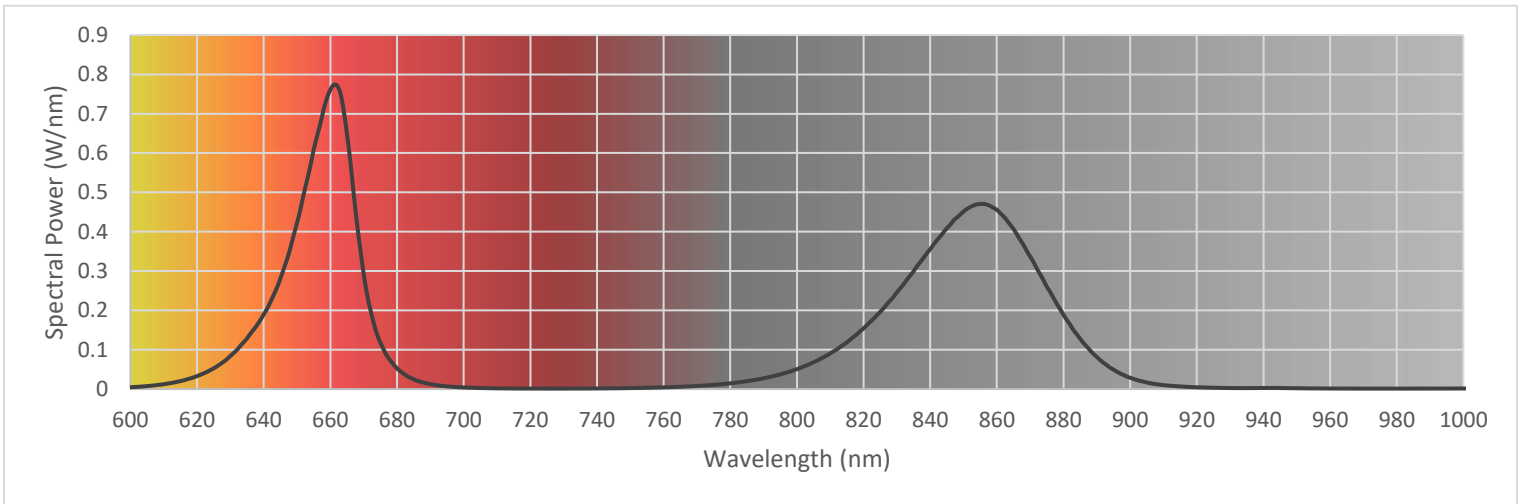
Voltage	120.0 Vac
Current	1.301 A
Power	121.9 W
Frequency	59.99 Hz
Power Factor	0.781
Current THD	8.8 %

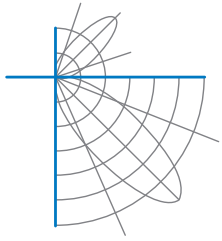


Test Report Number: LLIA001582-001

Summary Spectral Power Distribution (wavelength - nm, spectral power - W/nm)

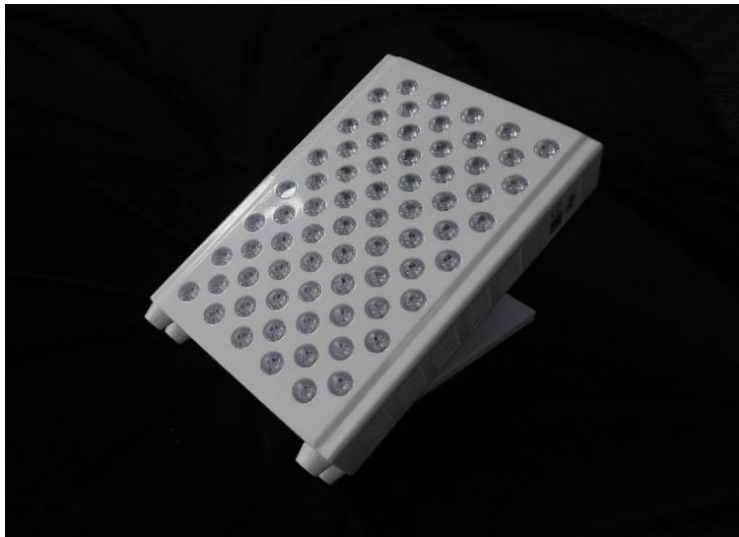
600	0.004596	700	0.004123	800	0.050494	900	0.028697
605	0.007566	705	0.002699	805	0.068263	905	0.016635
610	0.012334	710	0.001926	810	0.090784	910	0.010087
615	0.020281	715	0.001497	815	0.118690	915	0.006681
620	0.033077	720	0.001287	820	0.154111	920	0.004596
625	0.052688	725	0.001214	825	0.196571	925	0.003392
630	0.084246	730	0.001230	830	0.245927	930	0.002679
635	0.128865	735	0.001352	835	0.299410	935	0.002475
640	0.189809	740	0.001581	840	0.355515	940	0.002758
645	0.281123	745	0.001936	845	0.408864	945	0.002691
650	0.422580	750	0.002486	850	0.451449	950	0.002130
655	0.608806	755	0.003266	855	0.470400	955	0.001688
660	0.761133	760	0.004340	860	0.455939	960	0.001431
665	0.647544	765	0.005828	865	0.406975	965	0.001300
670	0.292454	770	0.007895	870	0.336933	970	0.001204
675	0.118463	775	0.010743	875	0.259993	975	0.001175
680	0.052541	780	0.014608	880	0.188712	980	0.001188
685	0.024948	785	0.020045	885	0.128166	985	0.001237
690	0.012531	790	0.027487	890	0.081728	990	0.001306
695	0.006856	795	0.037230	895	0.049388	995	0.001372
						1000	0.001471





Test Report Number: LLIA001582-001

Additional Pictures of Test Subject





Test Report Number: LLIA001582-001

Test Equipment Configuration: LightLab International Allentown 2m Integrating Sphere
Measurements acquired using a Labsphere CDS 2600 spectroradiometer
Testing was performed using 4π geometry

Test Temperature: 24.3 °C

Test Procedure: Tested in accordance with the applicable sections of:
LM-79-19, LM-78-17, LM-58-13, ANSI_ANSI C78.377-2017, TM-30-18

Significance: The laboratory has not participated in the selection of samples to be tested.
All testing is performed on the understanding that the significance of the report is limited to the extent that the test sample is representative of production units.

Notes: The measurements and other derived quantities contained in this report are based on the absolute data as measured.

Prorating the performance of the sample for the use of other component combinations (such as lamp / LED / Ballast / driver), or for use in different environmental conditions than that tested, may produce erroneous results.

This report is free of erasures and corrections

This report may contain data that are not covered by the NVLAP accreditation. Quantities marked with ‡ are not covered.

This report must not be used by the customer to claim product certification, approval or endorsement by NVLAP, NIST, or any agency of the Federal Government.